

Think  
GLOBAL PEOPLE

Relocate  
G L O B A L

## SPRAY HILL FARM, LAMBERHURST, KENT

---

A private countryside venue  
in Kent for exclusive gatherings

For workshops, away days,  
corporate events & bespoke  
coaching sessions



# Welcome

Set within 12 acres in Lamberhurst, Spray Hill Farm is a private countryside venue designed for focused, exclusive gatherings.

A rare combination of indoor space and open landscape, enabling teams to step out of the day-to-day and think differently.

We offer guests an inspiring nature connection experience, an immersive space to rethink and renew.



# Indoor space and open landscape



The Oast



The Lookout



The Cart Lodge



The Barn



The Marquee



The Grounds

# The Oast

The timber frame oasthouse with traditional roundel has lovely views of the grounds. It's a versatile open space, perfect for meetings and workshops with two potential breakout spaces.

- Capacity for 25 delegates
- Dimensions –  
Ground floor 40m<sup>2</sup>
- Breakout room – 16m<sup>2</sup>
- Natural daylight
- Free WiFi
- Kitchen facilities
- Toilet



# The Lookout

The Lookout in the oak framed Cart Lodge offers a private meeting space with access to the beautiful grounds to bring the outside in. Ideal for private one to ones or small workshops.

- Capacity for up to 8
- Dimensions – 30m<sup>2</sup>
- Natural daylight
- Free WiFi and flat screen
- Kitchen area and separate toilet and shower



# The Cart Lodge

The oak framed Cart Lodge has 3 bays and offers clients a Potting Shed with butler sink and long wooden bench worktops. Ideal for craft workshops or refreshment station.

The Cart Lodge can be booked alongside outdoor space hire.

- Capacity for 2-4 people
- Dimensions – Potting Shed 17 m<sup>2</sup>
- Natural daylight
- Sink and catering area
- Separate toilet



# The Barn

The Barn is original and built in the 17<sup>th</sup> century. The space has traditional doors front and back.

An additional facility for corporate events and film crew.

- Capacity for 3-4 people
- Dimensions –  
Barn threshing floor 29 m<sup>2</sup>
- Natural daylight

Watch our video:

<https://youtu.be/87Jt8-9eP3A>



# The Grounds

The Grounds has 12 acres of exceptional garden space, large pond and paddocks. Stunning views to inspire creativity for corporate teams, artists, photographers and writers.

Engage in a full sensory immersive experience.

- Capacity for 100+ people
- 12 acres of garden and paddock
- 2 gazebo tents available
- Marquee hire on request
- Access to toilet facilities



# Meetings & workshops

Exclusive use of Spray Hill Farm ensures privacy and focus to meetings, workshops and team training sessions.

Flexible indoor and outdoor workshop setups supported by our events team.

Team-building programmes can be integrated into any itinerary, using Spray Hill Farm's extensive 12 acre grounds.



# Away days & corporate events

Ideal for strategy days, leadership offsites, and team connection in a private setting.

The tranquil, countryside surroundings create a structured and informal space that inspires fresh thinking and innovative ideas.

Spray Hill Farm's dedicated event planning team ensures that every detail is taken care of, allowing businesses to fully immerse themselves in the outdoor experience.



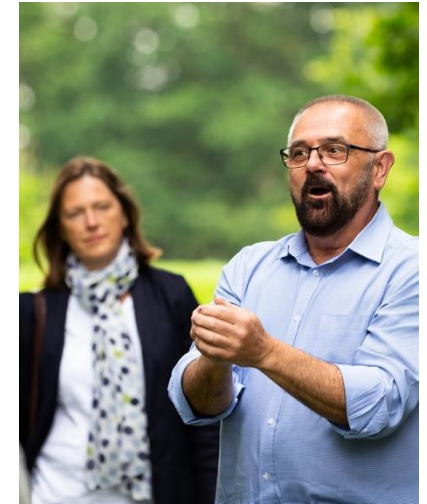
# Outdoor coaching

Ideal for immersive coaching sessions, leadership development and small group work in a tranquil natural setting.

Find clarity in your thinking and enhance the wellbeing of your guests, whatever your agenda.

Take inspiration from our wonderful setting.

Enjoy the benefits of being outdoors so you and your team can rethink, renew and reconnect with nature.



# Bespoke visits

Nestled amidst the scenic beauty of the Kent countryside, our dedicated team will create fully tailored events, workshops, catering and facilitation.

Suitable for hybrid meetings, one to ones can be set up, activities arranged, food and drink taken care of.

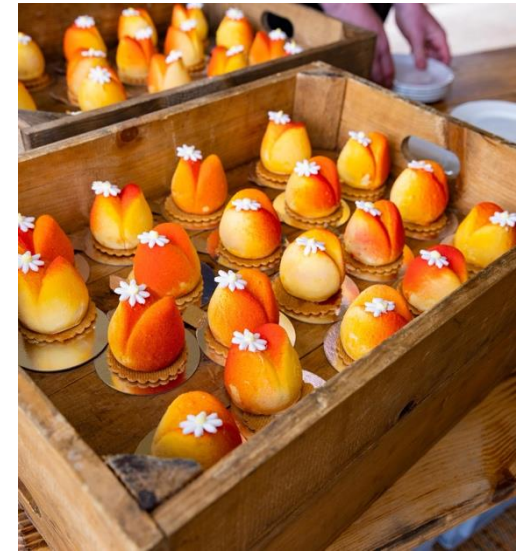
We have the perfect place to connect with people remotely when needed.



# Bespoke services

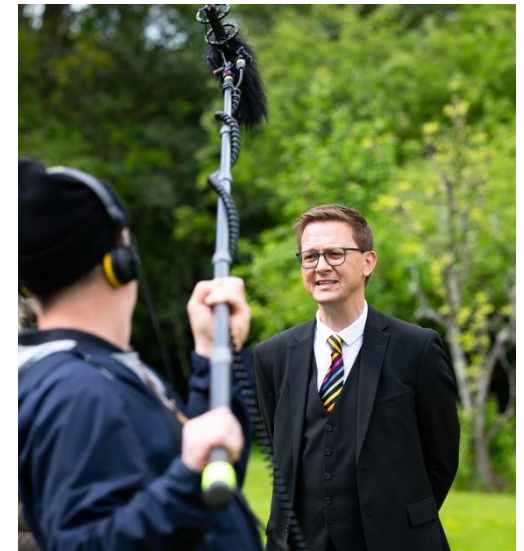
## Food and drink

We can provide full catering, or you may organise your own hospitality to suit your needs.



## Video & Photography

Filming and photography can be arranged.



## Concierge Services

We can arrange an itinerary to suit your purpose.

# Beyond the event

## Accommodation

We can offer accommodation suggestions nearby.

## What's nearby

Scotney Castle is next door, nearby is Bedgebury Pinetum, Bewl Water, Sissinghurst and historic houses.

Enjoy golf in Lamberhurst or further afield, and fishing, riding and other outdoor pursuits.



# Packages

## The Oast or The Lookout

9.00am arrival – 4.00pm depart

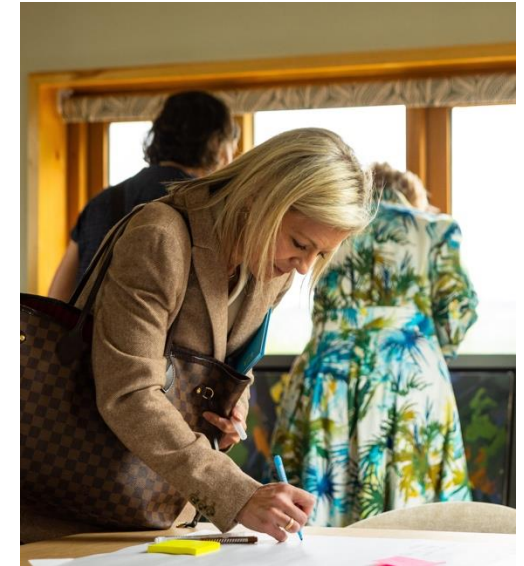
Experience indoor meeting space with catered food and beverages, essential amenities, light buffet lunch.

**The Oast** – maximum 25 delegates

**The Lookout** – maximum 8 delegates.

Book now to reserve a meeting space, book a daily package, or plan a private event for an unforgettable team day out.

Pricing and booking is on request.



# Packages

## The Grounds

9.00am arrival – 4.00pm depart

Bridging the indoor and outdoor experience set in the stunning backdrop of Spray Hill Farm.

Experience outdoor event space with hot beverages, pastries, essential amenities, light buffet lunch.

Enjoy a grounded guided tour across our ancient farmland.

Maximum of 100+ delegates.

Pricing and booking is on request.



# Location

**Easily accessible** – within easy reach of London, Surrey and Sussex.

**By road** – Follow direction from M25 and A21.

**By air** – Gatwick, Heathrow and Stansted airport are within 1 hour 15 mins drive.

**By train** – The closest railway stations with the most trains and taxi ranks are Tonbridge or Tunbridge Wells. Alternative stations are Paddock Wood, Frant or Wadhurst.

**Parking** – Our entrance is a private road, signposted '**Spray Hill Farm**'. There is plenty of car parking space in the summer months.



**Address** – Spray Hill Farm, Hastings Road, Lamberhurst, Kent, TN3 8JB, UK

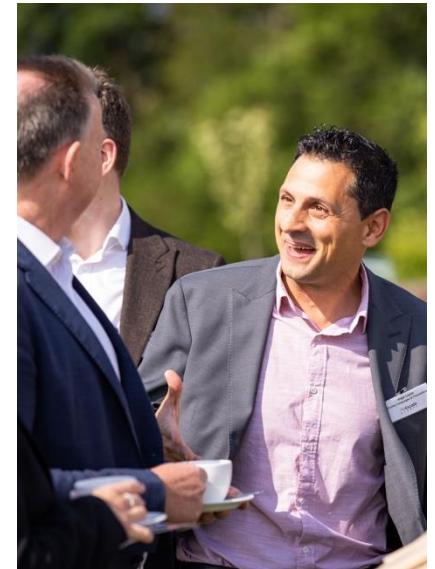
**What3Words** – [///secure.guesswork.students](https://www.what3words.com/s/secure.guesswork.students).

# Contact us

If you are ready to start planning,  
or you would like to enquire  
further, please speak to:

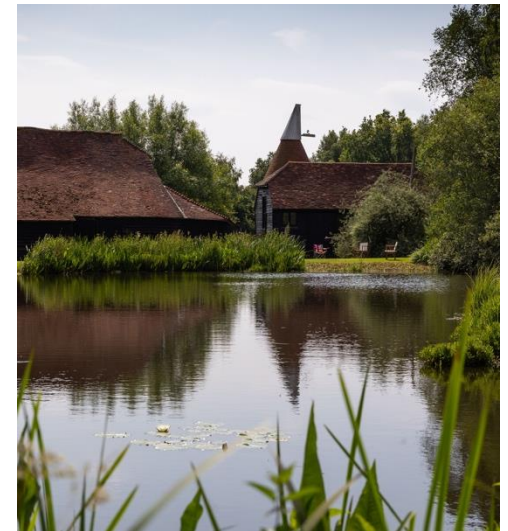
Fiona Murchie,  
Founder & Managing Editor,  
Relocate Global

Tel: +44 (0)1892 891 334  
Mob: +44 (0)7836 504483



# Thinking space

“The perfect venue to host your next meeting or small event, where the quality of the natural environment will inspire your thinking and enhance the wellbeing of your guests, whatever your agenda.”



# Inspiring venue

“The venue was beautiful. The conversations were inspiring. But what stayed with me most was something else – the importance of community.”

“Fiona created a welcoming space where people could connect, share ideas, and build new relationships.”

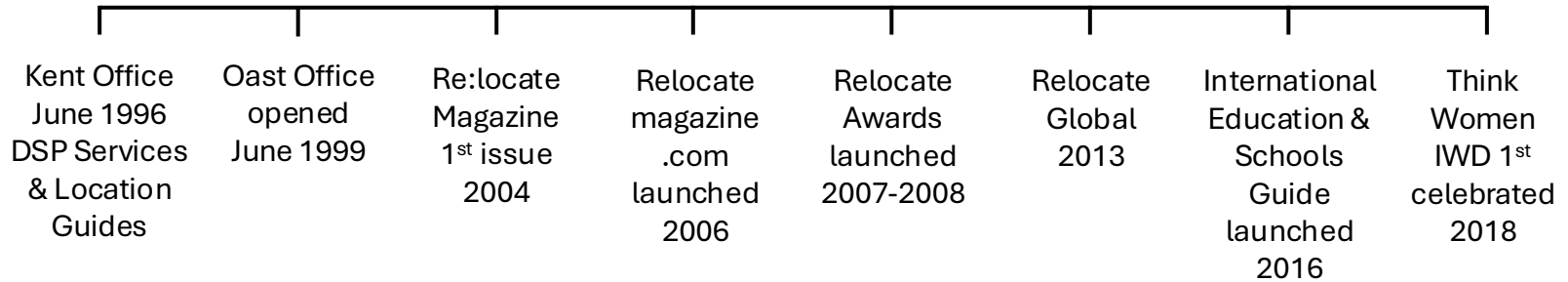




10 years  
Profile Locations  
Profile Relocations  
**IN ABERDEEN**

## Relocate Global & Think Global People Timeline

### 30 Years in Kent



# Videos



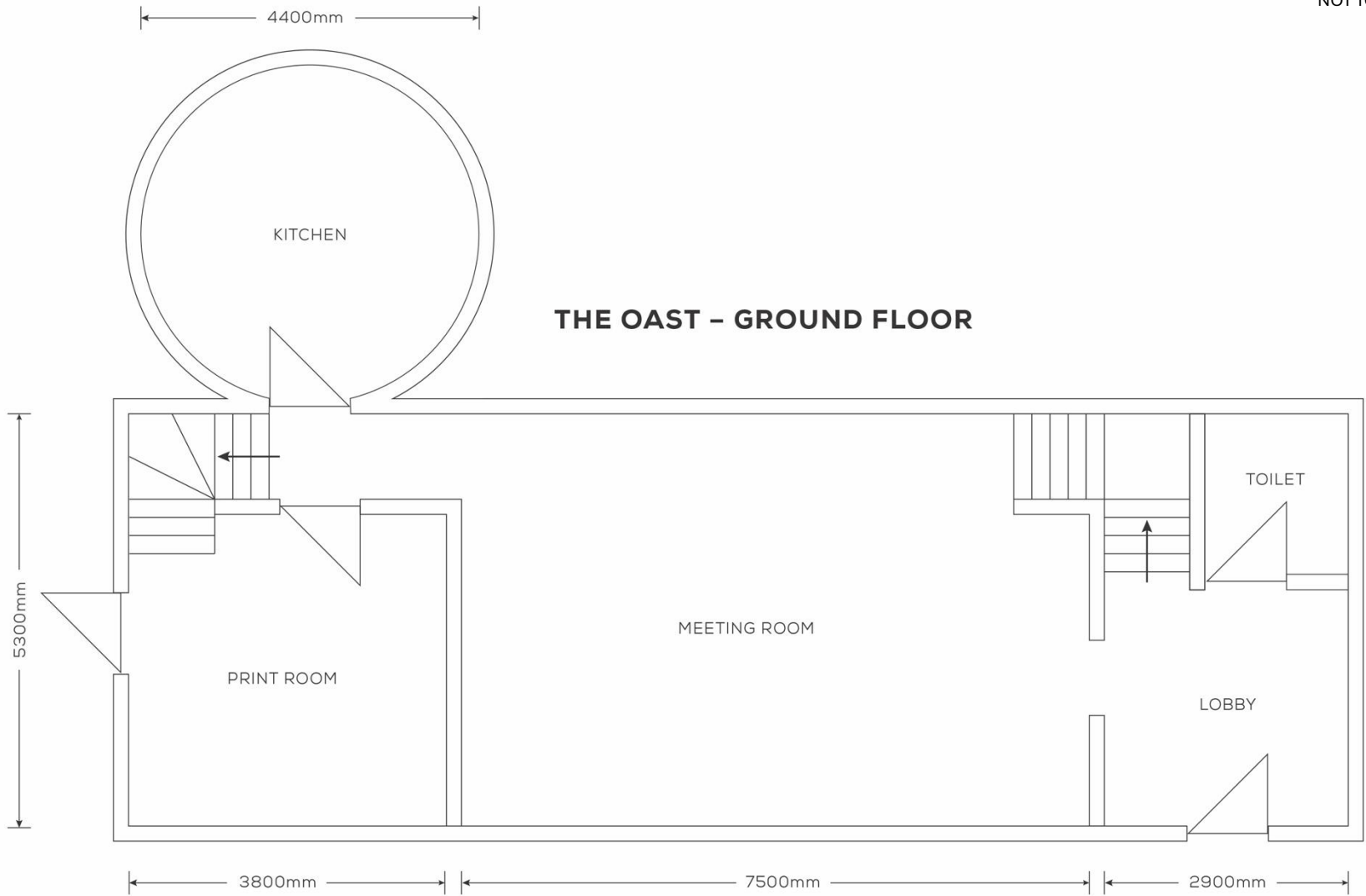
<https://youtu.be/87Jt8-9eP3A>



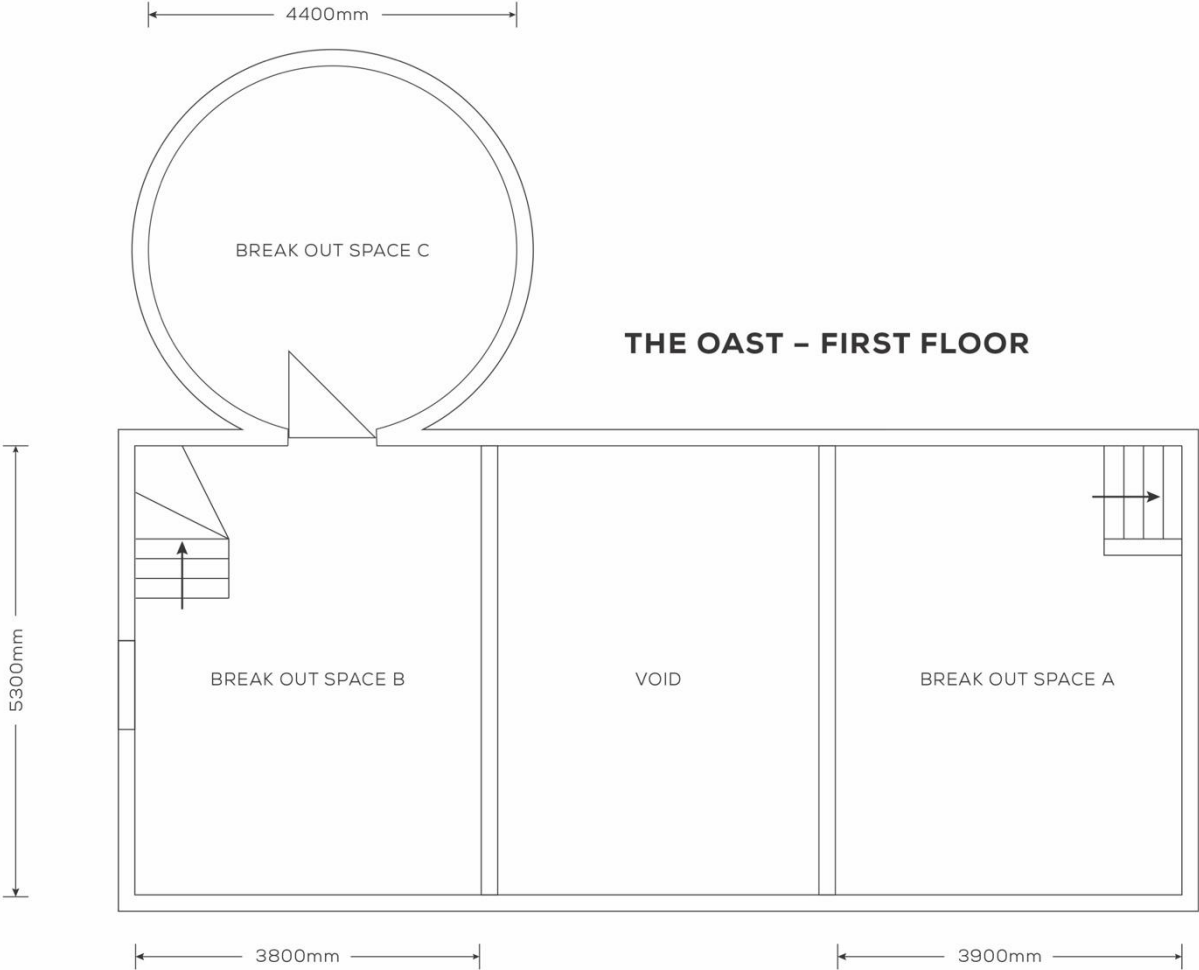
[https://youtu.be/k3zSP\\_Er95o](https://youtu.be/k3zSP_Er95o)



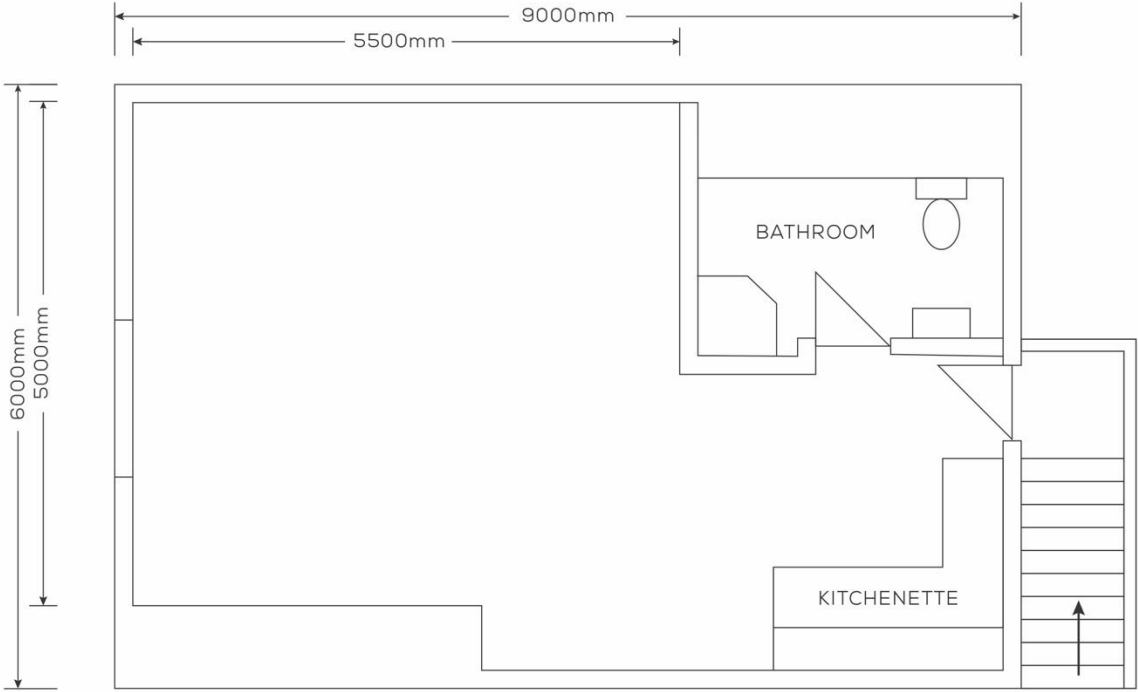
NOT TO SCALE



NOT TO SCALE



# THE LOOKOUT



Think  
GLOBAL PEOPLE

Relocate  
G L O B A L

T: +44 (0)1892 891334

E: [events@relocatemagazine.com](mailto:events@relocatemagazine.com)

[thinkglobalpeople.com](http://thinkglobalpeople.com) | [relocateglobal.com](http://relocateglobal.com)

 Relocate Global

 @relocate\_global

 /likerelocate

 RelocateMagazine

