



INTERNATIONAL EDUCATION & SCHOOL GROUPS

RATE CARD 2023/24

Multimedia to engage, inform and support parents, employers and relocation professionals

'Education and schooling decisions made easier'










OUR MEDIA

Our websites relocateglobal.com & thinkglobalpeople.com connect, inspire and inform our audience of leaders, decision makers and experts across global mobility and international business. We make education and schooling decisions easier for parents, employers and relocation professionals.



Our websites average over 500,000 page views per year with our Global Education section attracting over half the audience. Global Education offers the following targeted information providing various engagement touchpoints for Schools, School Groups, Education Consultants and Online Schools to reach their audience.

<p>Education and Schools</p> <p>Relocating with school-age children is one of the biggest challenges families can face.</p> 	<p>Country Guides to Schools</p> <p>Explore schooling across Asia, Europe, North America, UK, Middle East & Africa.</p> 	<p>Featured Schools and Directory</p> <p>Access schools around the world. Enjoy their content, videos and virtual tours.</p> 	<p>Guide to International Education & Schools</p> <p>For parents, employers & relocation professionals.</p> 
<p>International Education and Schools' Fair</p> <p>Follows the admissions cycle for your child's next move.</p> 	<p>Online Schools</p> <p>Find out more about this dynamic and fast growth sector, with curriculum options around the world.</p> 	<p>Education Webinars</p> <p>Watch the latest webinar recordings to help international parents choose the right schools.</p> 	<p>School Groups</p> <p>Discover more about school groups around the world and how they can help parents find a school.</p> 
<p>Education Consultants</p> <p>Find out how they can help international parents choose the right schools.</p> 	<p>Learning and Development</p> <p>Lifelong learning, training and development to grow your people.</p> 	<p>Research and Higher Education</p> <p>Latest research that impacts global working, mobility, leadership & education.</p> 	<p>Think Global People</p> <p>Our exclusive membership for thought leaders, three tiers: Affiliate, Collaborative or Executive Member.</p> 

Additional promotional opportunities through our digital [Think Global People/Relocate magazine](#), [Events](#), [Think Global People and Relocate Awards](#) and our monthly e-newsletter.

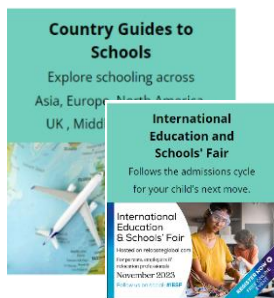
SCHOOL GROUPS RATE CARD

Opportunities to engage our audience with various touchpoints both on relocateglobal.com and thinkglobalpeople.com



School Group Package **£1,100**
 Featured School Group page
 Home page posting of Featured Videos and Featured Articles
 Main Directory Listing
 LeaderBoard 3mth

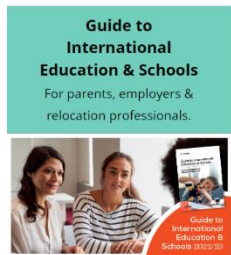
Featured School Groups are also promoted in the International Education and Schools Fair Hub in the Autumn and Spring



Featured School Package **£715**
 Setting out the special attributes of a School
 (A 35% discount shown when booked with School Group Package)

An alternative is a single Featured School page as part of the Package setting out details of **all** the Group Schools in that country.

See School Rate Card for details



Guide to International Education and Schools **£950**
 Featured Article
 Photographs and quotes in our editorial
 Leaderboard

Articles are also posted separately in other relevant sections



Webinar **£1,600**
 Solo or panel recorded webinar (one of three presenters)

Webinars are generally hosted by Fiona Murchie Managing Editor looking for the special attributes of the School or School Group

Webinars are also promoted in the International Education and Schools Fair Hub in the Autumn and Spring



Digital Magazine: Think Global People / Relocate **£1,350**
 Published quarterly. Double Page Spread (DPS)

Magazine articles are also posted separately on the website in the relevant sections

The digital magazine is also circulated to our 6,000 subscribers

SCHOOLS' RATE CARD

Opportunities to engage our audience with various touchpoints both on relocateglobal.com and thinkglobalpeople.com



Featured School Package

£1,100

Country Guide Featured School with Featured School page
Home page Featured Videos and Featured Articles
Featured Schools and Main Directory Listing
LeaderBoard 3mth

Featured Schools are also promoted in the International Education and Schools' Fair Hub in the Autumn and Spring



Guide to International Education and Schools

£950

Featured Article
Photographs and quotes in our editorial
Leaderboard

Articles are also posted separately in other relevant sections



Webinar

£1,600

Solo or panel recorded webinar (one of three presenters)

Webinars are generally hosted by Fiona Murchie, Managing Editor, to explore the special attributes of the school or topic

Webinars are also promoted in the International Education and Schools' Fair Hub in the Autumn and Spring



Digital Magazine: Think Global People / Relocate

£1,350

Published quarterly. Double Page Spread (DPS)

Magazine articles are also posted separately on the website in the relevant sections

The digital magazine is circulated to our 6,000 subscribers

PREMIUM PACKAGE (20% DISCOUNT)

£4,000

- **FEATURED SCHOOL PACKAGE**
- **GUIDE TO INTERNATIONAL EDUCATION AND SCHOOLS**
- **WEBINAR**
- **THINK GLOBAL PEOPLE / RELOCATE MAGAZINE DPS**

THINK GLOBAL PEOPLE AND RELOCATE AWARDS



It's time to showcase your achievements over the last year by [entering the Think Global People & Relocate Awards](#). Flexibility and choice has never been so important. Craft that winning entry to show us how you are responding to challenge and opportunity.

The [Excellence in education: Schools & Education Consultancy](#) Award recognises quality education for mobile families and reflects how, a successful, timely and stress-free relocation supports talent retention and promotes employer brand. Check out all the [Award Categories](#) to showcase your organisation's achievements.

It will be June before you know it when we celebrate our winners in style at the [Awards Gala Dinner in London](#). [Sponsorship](#) available.

THINK GLOBAL WOMEN



Following our highly successful and impactful International Women's Day (IWD) event last year, we highlight this year's theme of 'Inspire Inclusion' to champion inclusion in all its forms. Explore the value of international experience and how to share knowledge and expertise to deliver greater equity for women and girls and help to grow sustainable jobs and opportunities around the world.

Our [Think Global Women](#) event, this year on 8 March, will not only support your own personal and professional development but will provide practical tools to accelerate change in your organization or community. Be part of the panel or facilitate a table discussion – [Sponsorship](#) available.



NEWSLETTER SPONSORSHIP

E-newsletters with news and feature articles are distributed monthly to our 6,000 subscribers. Sponsorship package with Leaderboard advert and sponsored article **£1,000**

CONTACT US

Fiona Murchie, Managing Editor & MD
Editorial coverage: education@relocatemagazine.com
Advertising & Sponsorship
Alessandra Gnudi: agnudi@relocatemagazine.com,
David Ward: David@relocatemagazine.com
+44 (0)1892 891334

Relocate
G L O B A L

Think
GLOBAL
PEOPLE